

www.brainstorm3d.com
✉ contact@brainstorm3d.com
🐦 [@brainstorm3d](https://twitter.com/brainstorm3d)
📺 [brainstormmultimedia](https://www.youtube.com/channel/UC...)
🌐 [brainstorm3d](https://www.linkedin.com/company/brainstorm3d)



GETTING STARTED WITH EDISON PRO

**A STEP BY STEP GUIDE TO INSTALL YOUR
EDISON PRO IN A FEW MINUTES**

This **Getting Started Guide** will detail all of the necessary steps to get up and running quickly with your Edison Pro system and to start creating your presentations. Before we get started setting up the workstation, please make sure that you have registered your system online at the following URL: edisonpro.brainstorm3d.com

Once you have registered your system, you can follow the connections diagram to correctly setup your workstation hardware system. When you have completed the software setup, you can access the Edison Pro training and support at the following URLs:

Edison PRO Tutorials

vimeo.com/showcase/edison (English)

vimeo.com/showcase/edison-esp (Spanish)

Brainstorm Users Blog

usersblog.brainstorm3d.com

Web Support Form

edison-support.brainstorm3d.com

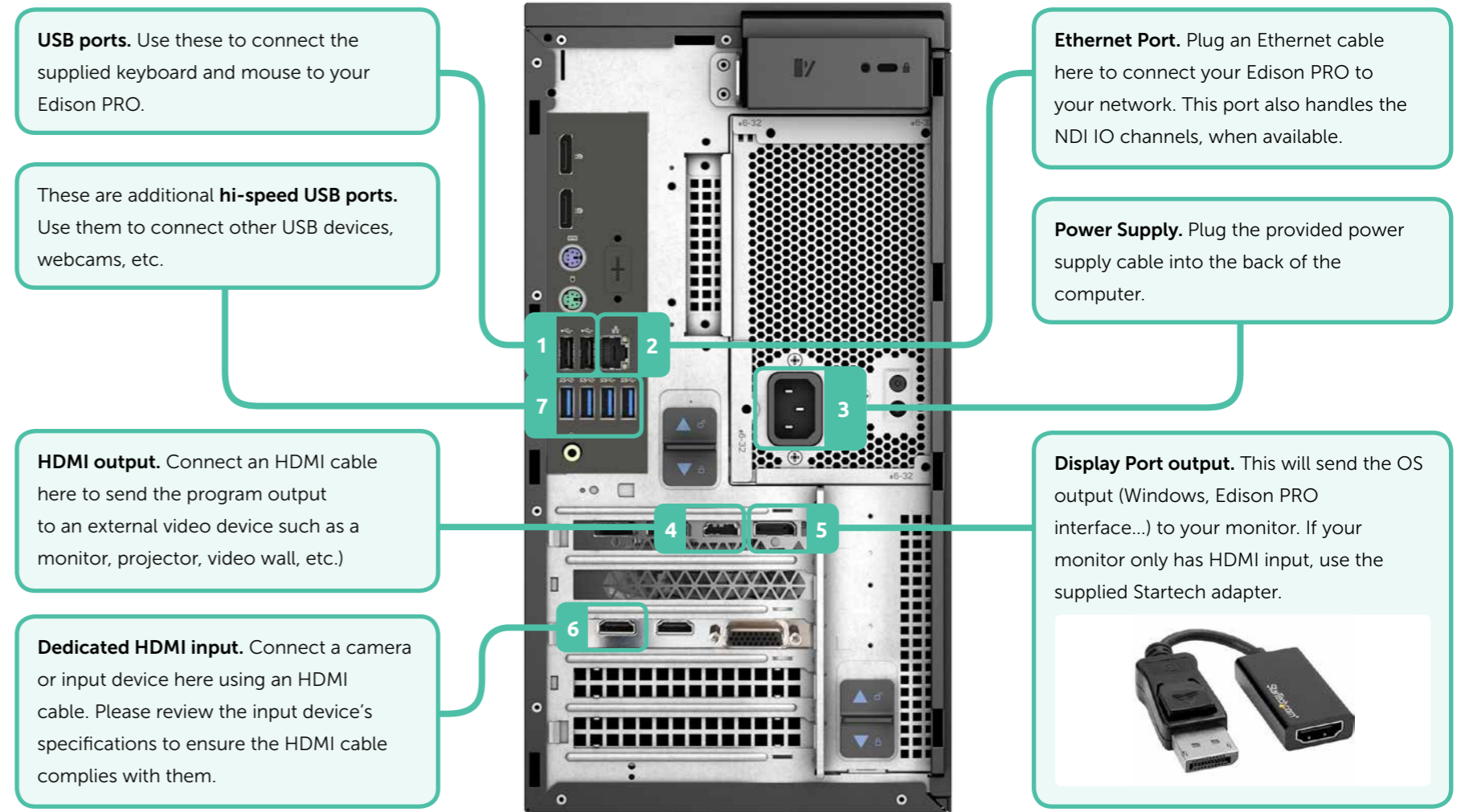
If you wish to follow this Guide on the Internet, please access the following URL or use the QR code below:

<https://www.brainstorm3d.com/getting-started-with-edison-pro>



CONNECTIONS DIAGRAM

It is essential that the peripherals or external devices connected to your Edison PRO system are done correctly. Please follow this diagram to ensure that all of the cables and devices are connected properly.



1 TURN ON YOUR SYSTEM



Locate the power button on the front of the workstation, far left side at the top. Press the power button to power up the Edison Pro.

2 LOG INTO YOUR SYSTEM



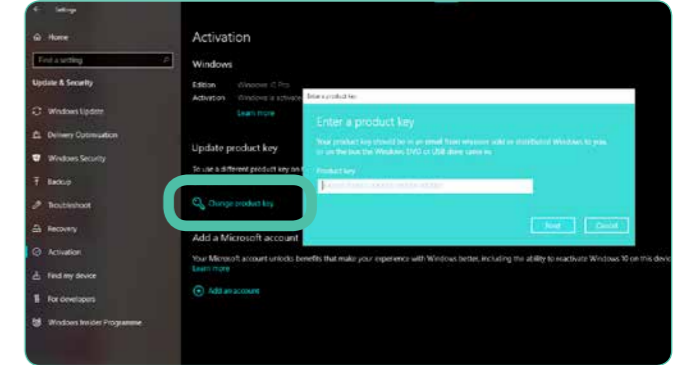
Once the Edison PRO has booted up, you will see the Windows **login screen** and can begin to configure the system. The default administrator password is **Br41nst0rm**, but we recommend to **change** it to comply with your company's IT department requirements.

3 LOCATE WINDOWS KEY



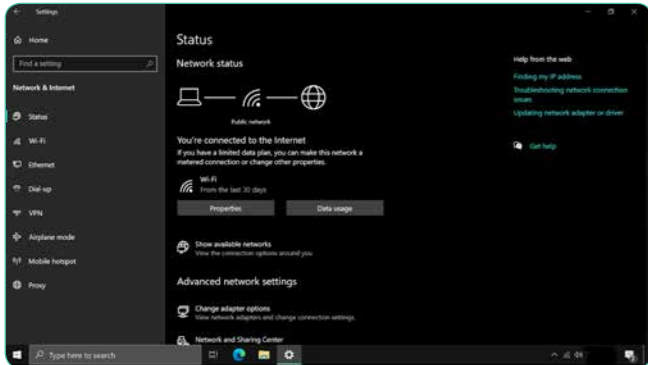
Your Edison PRO's **unique Windows Product Key** can be found on the top side of the Edison PRO workstation, along with other relevant information and registration numbers. Please use this key to register your copy of Windows (see step 4).

4 REGISTER WINDOWS COPY



You will need to register the workstation's Windows copy. If you skip this step, the system will prompt you to do it later. To register your copy of Windows, go to **Update & Security** (Start>Settings>Update & Security) and on the **Activation** tab scroll down and click **Change product key**. Once there, enter the product key in the pop up window.

5 CONFIGURE NETWORK



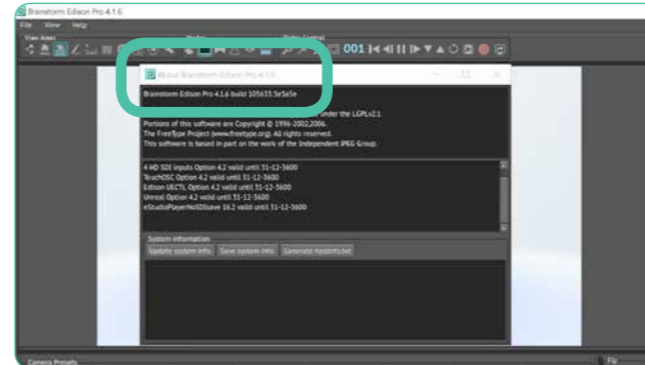
Once logged in, go to the **Network Settings** (Start>Settings>Network & Internet) and configure them to connect the system to your network, to make sure you have an Internet connection.

6 OPEN APPLICATION



Once you have connected the system to the internet, launch the Edison PRO software by double clicking on its icon. Once the software starts, it will license itself **automatically** based on the registration data.

7 VERIFY SW VERSION

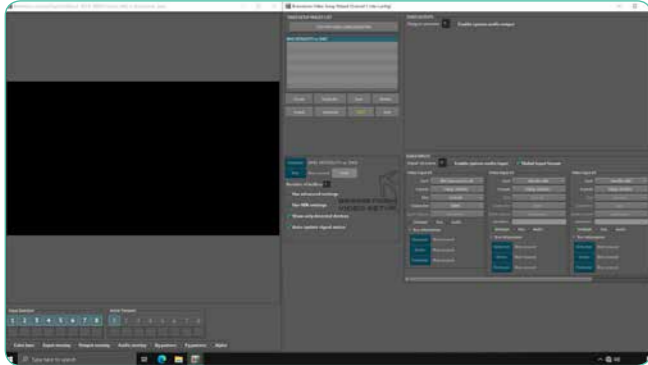


Your Edison PRO system should have the latest version of Edison Pro installed. Please ensure the version installed in your workstation is **V4.1.6**. If the software needs to be updated, you can download it at the following URL: <https://webftp.brainstorm3d.com/edison/stable/>

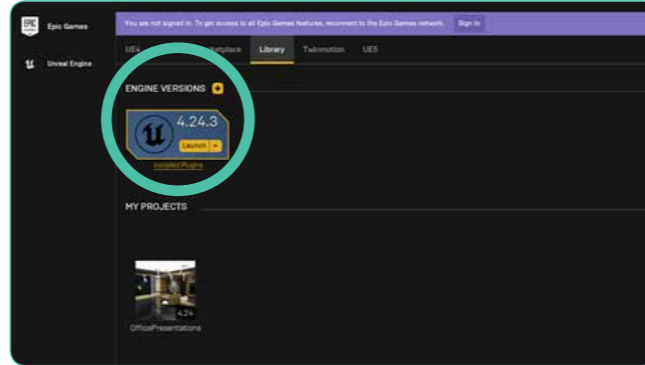
8 START USING EDISON PRO



Now that your Edison PRO system is fully setup and running, you can now start using it. Feel free to follow the links to watch our **video tutorials**, download the **free assets**, and visit the **Users Blog**.



You can now plug your HDMI camera into the HDMI input (see connections diagram). By default, the input format is 1080/30P, but you may change input/output settings as required by opening the VideoSetup application on your desktop. Watch the Tutorials for more information.



If you are using any Unreal Engine project as a background for your presentations, please ensure that it is compatible with Unreal Engine 4.24.3. This version may change if or when Edison PRO is updated, so please check the Users Blog for any updated information.